

Donaldson®
Torit®

**LP BAGHOUSE
DUST COLLECTORS**

DURA-LIFE™
Twice The Life Filter Bags



DEPENDABLE, REVERSE AIR ROUND BAGHOUSE

The Donaldson® Torit® LP Baghouse dust collector provides superior bag filter cleaning performance in a reverse air design. The LP advantage is a cleaning arm with a flow-stop plate that keeps air from flowing through the bag filters before and after cleaning. Dust from cleaned bag filters cannot be re-entrained onto adjacent bags, resulting in lower pressure drop and reduced energy costs. Combine this with Dura-Life™ “Twice the Life” bag filters as standard and this LP Baghouse is better than any other reverse air collector on the market today.

The LP Features:

- Flow-stop plate cleaning arm reduces dust re-entrainment
- Integrated helix in hopper reduces dust loading on bag filters
- Award winning Dura-Life™ “Twice the Life” bag filters
- Single inlet, outlet and hopper reduces ducting and hopper outlet costs
- LP cleaning provides a constant process airflow and fewer moving parts, which reduces maintenance and disruptions to system airflow
- LP cleaning system requires no compressed air
- Optional live bottom hopper grinds dusts to prevent bridging in hopper



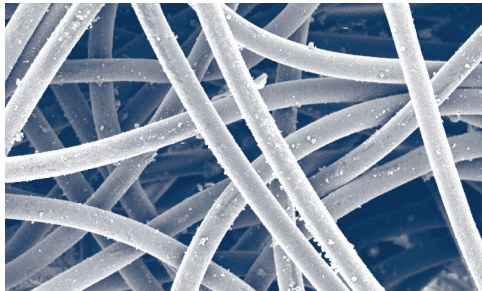
The LP cleaning arm features a flow-stop plate, which stops the airflow through recently cleaned bags to reduce dust re-entrainment

SUPERIOR PERFORMANCE
WITH DURA-LIFE™ “TWICE THE LIFE” BAG FILTERS

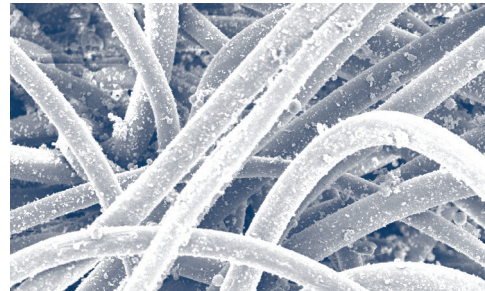
DURA-LIFE™ – A TECHNOLOGY BREAKTHROUGH FOR BAG USERS

STANDARD IN ALL DONALDSON TORIT LP BAGHOUSE COLLECTORS

Traditional 16 oz. (453.6 g) polyester bags are produced with a needling process that creates larger pores where dust can embed into the fabric, inhibiting cleaning and reducing bag life. Dura-Life bags are engineered with a unique hydroentanglement process that uses water to blend the fibers. This process provides a more uniform material with smaller pores, better surface loading, and better cleaning. These advantages provide twice the operating life before bags need to be replaced due to pressure drop. Longer life from Dura-Life bags lowers maintenance and operating costs and raises baghouse dust collection to a whole new level.



Dura-Life Bag-Clean Air Side
(300x)



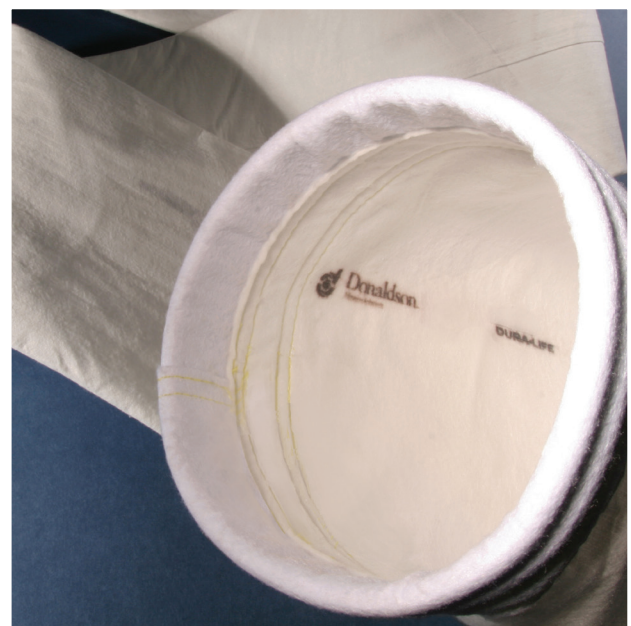
Polyester Bag-Clean Air Side
(300x)

These photos were taken with a scanning electron microscope of bag media used in a collector that was filtering fly ash. The bags were removed after 2,700 hours of use. Air-to-media ratio was 4.5 to 1. Pressure drop was 6 in. on polyester bags and 2 in. on Dura-Life.

DURA-LIFE BAGS PROVIDE BIG BENEFITS

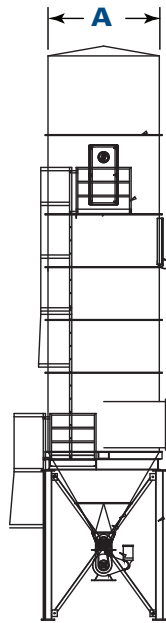
Dura-Life technology provides better surface loading and better pulse cleaning, resulting in:

- Two to three times longer bag life
- Energy savings due to lower pressure drop
- Reduced replacement bag costs due to fewer bag changeouts
- Reduced maintenance and operating costs due to fewer bag changeouts
- 30% fewer emissions based on EPA tests

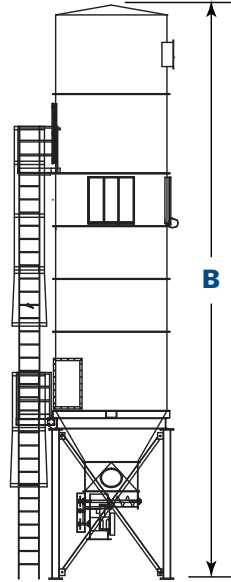


DIMENSIONS & SPECIFICATIONS

MODEL LP-108* SHOWN

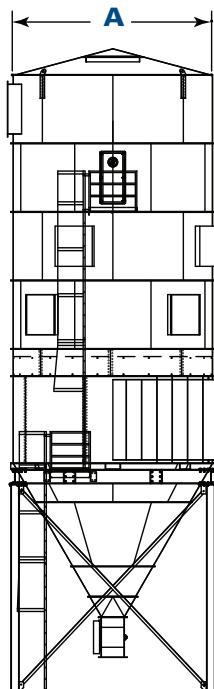


Front View LP

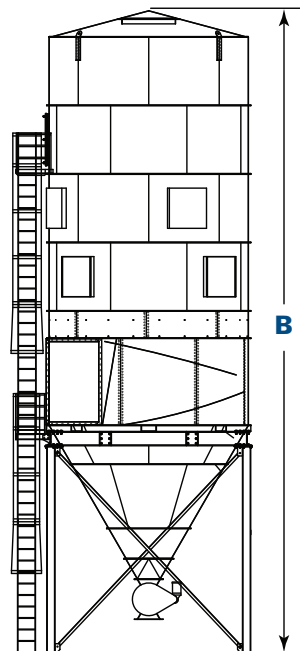


Side View LP

MODEL LP-528** SHOWN



Front View LP



Side View LP

* Model 108 LP shown with optional live bottom hopper and rotary valve.

** Model 528 shown with optional rotary valve.

Model	Nominal Airflow [†]		Cloth Area		Length of Bag Filters		Cleaning Fan (hp)	Shipping Weight*		Dimensions			
	cfm	m ³ /h	ft ²	m ²	ft ²	m ²		lb	kg	A**		B**	
										in	mm	in	mm
72LP10	9,600	16,307	1,200	111.5	10	0.9	7.5	8,500	3,855.5	85.9	2,181.9	437.6	11,115.0
72LP12	11,520	19,568	1,440	133.8	12	1.1	7.5	9,000	4,082.3	85.9	2,181.9	485.6	12,334.2
108LP10	14,400	24,461	1,800	167.2	10	0.9	10	11,000	4,989.5	101.3	2,573.0	478.3	12,148.8
108LP12	17,280	29,353	2,160	200.7	12	1.1	10	14,000	6,350.3	101.3	2,573.0	526.8	13,380.7
150LP10	20,000	33,973	2,500	232.3	10	0.9	10	13,500	6,123.5	116.5	2,959.1	485.6	12,334.2
150LP12	24,000	40,768	3,000	278.7	12	1.1	10	14,500	6,577.1	116.5	2,959.1	534.1	13,566.1
198LP10	26,400	44,844	3,300	306.6	10	0.9	15	16,000	7,257.5	131.8	3,347.7	512.2	13,009.9
198LP12	31,680	53,813	3,960	367.9	12	1.1	15	17,000	7,711.1	131.8	3,347.7	560.7	14,241.8
252LP10	33,600	57,075	4,200	390.2	10	0.9	15	19,500	8,845.1	147.1	3,736.3	517.8	13,152.1
252LP12	40,320	68,490	5,040	468.2	12	1.1	15	21,000	9,525.4	147.1	3,736.3	566.3	14,384.0
312LP10	41,600	70,664	5,200	483.1	10	0.9	20	22,500	10,205.8	162.4	4,125.0	553.1	14,048.7
312LP12	49,920	84,797	6,240	579.7	12	1.1	20	24,000	10,886.2	162.4	4,125.0	601.6	15,280.6
378LP10	50,400	85,612	6,300	585.3	10	0.9	25	28,500	12,927.4	177.7	4,513.6	537.1	13,642.3
378LP12	60,480	102,734	7,560	702.3	12	1.1	25	30,000	13,607.8	177.7	4,513.6	585.6	14,874.2
450LP10	60,000	101,919	7,500	696.8	10	0.9	25	33,500	15,195.3	192.9	4,899.7	612.2	15,549.9
450LP12	72,000	122,303	9,000	836.1	12	1.1	25	35,500	16,102.5	192.9	4,899.7	660.7	16,781.8
528LP10	70,400	119,585	8,800	817.5	10	0.9	25	38,500	17,463.3	208.3	5,290.8	603.8	15,336.5
528LP12	84,480	143,502	10,560	981.0	12	1.1	25	41,000	18,597.3	208.3	5,290.8	675.8	17,165.3
594LP10	79,200	134,533	9,900	919.7	10	0.9	30	45,000	20,411.7	223.6	5,679.4	669.0	16,992.6
594LP12	95,040	161,440	11,880	1,103.7	12	1.1	30	48,000	21,772.4	223.6	5,679.4	741.0	18,821.4
684LP10	91,200	154,917	11,400	1,059.1	10	0.9	40	51,000	23,133.2	238.8	6,065.5	696.4	17,688.6
684LP12	109,440	185,900	13,680	1,270.9	12	1.1	40	53,500	24,267.2	238.8	6,065.5	768.4	19,517.4
780LP10	104,000	176,660	13,000	1,207.7	10	0.9	40	63,500	28,803.1	254.1	6,454.1	733.6	18,633.4
780LP12	124,800	211,992	15,600	1,449.2	12	1.1	40	67,000	30,390.7	254.1	6,454.1	805.6	20,462.2
882LP10	117,600	199,761	14,700	1,365.6	10	0.9	50	77,500	35,153.4	269.3	6,840.2	748.8	19,019.5
882LP12	141,120	239,713	17,640	1,638.8	12	1.1	50	82,500	37,421.4	269.3	6,840.2	820.8	20,848.3

† Based on clean filters.

* Legs included in weight.

** Dimensions should be used as general estimates. Height is based on unit with 36"(914.4 mm) clearance under hopper outlet pack and explosion vents. Be sure to look at dimensions after options are selected.



LP baghouse dust collectors can be equipped with bin houses to shelter 40 yard (36.6 m) dumpsters and dust from adverse weather conditions. The bin houses come with ceiling-mounted leveling screws, which evenly distribute dust throughout the entire dumpster.

PROVEN PERFORMANCE ON HUNDREDS OF APPLICATIONS



DUAL 594LP12 at Door Plant
180,000+ cfm/combined (305,757+ m³/h combined)



882LP12 at Almond Plant
140,000 cfm/each (237,811 m³/h each)



THREE 684LP12 at Almond Shelling Plant
100,000 cfm/each (169,865 m³/h each)



528LP12 at Cabinet Factory
70,000 cfm (118,906 m³/h)



TWO 594LP12 at Cabinet Plant
80,000 cfm/each (135,892 m³/h each)



780LP12 at Coal Classifying Plant
75,000 cfm (127,339 m³/h)

STANDARD FEATURES & AVAILABLE OPTIONS

Collector Design	Std	Opt
Clean-Side Bag Removal	✓	
Walk-In Clean Air Plenum	✓	
10-Gauge Carbon Steel Construction	✓	
Heavy-Duty 7 Gauge Plate Tubesheet	✓	
Rated 17-inches (431.8 mm) Water Gauge	✓	
Internal Sweep Arm Cleaning Mechanism	✓	
Explosion-Proof Reverse Air Fan & Motor*	✓	
Aluminum Fan Wheel	✓	
Flanged Inlet, Outlet & Body	✓	
Easy-Lift Lifting Ears	✓	
Tangential Inlet	✓	
Service Platform & Ladder & Ladder Cages		✓
Stainless Steel Construction		✓
Bags & Cages		
Dura-Life Twice the Life Felt Snap-In Bag Filters	✓	
Galvanized Snap-In Bag Cage	✓	
Variety of Filter Bag Media Options		✓
Paint System		
Prime Coated Interior	✓	
Durable Industrial Finish Exterior	✓	
Standard Colors: Torit Blue or Storm White	✓	
Custom Colors		✓

Hopper Design	Std	Opt
60° Hoppers	✓	
Flanged Hopper Discharge (per specification)	✓	
Hopper Access Panel	✓	
Coupling for High Level Indicator	✓	
Lexan View Port	✓	
High Level Indicator		✓
Support Structure †		
36" (914.4 mm) Clearance Leg Pack	✓	
Custom Clearance Leg Packs		✓
Electrical Controls, Gauges and Enclosures		
Magnehelic ^{***} Gauge	✓	
Photohelic ^{**} Gauge		✓
Photohelic [®] Gauge (Weatherproof)		✓
Safety Features		
Sprinkler Kit Assembly		✓
Explosion Vents		✓
Interior Light for Walk-In Plenum		✓
Warranty		
10-Year Warranty	✓	

* All 60 Hz motors 1 HP and above are compliant with EISA.

** Magnehelic and Photohelic are registered trademarks of Dwyer Instruments, Inc.

† Donaldson Torit equipment is designed to IBC guidelines for specific wind speed exposure and seismic spectral acceleration at grade level. Contact your Donaldson Torit representative for detailed information available on the equipment's Spec Control drawings. Equipment may be customized to meet unique, customer-specified site requirements.

Global Support

- Facilities in 37 countries
- 40 manufacturing plants and 14 distribution centers

Leading Technology

- Over 1,000 engineers and scientists worldwide
- Broad range of innovative collectors and filters
- 100s of filter media formulations

Experience and Service

- Technical expertise and support
- Ready-to-ship filters and parts within 24 hours
- 1,000,000+ dust, fume and mist collectors installed

Call Donaldson® Torit® to get cleaner air today:

800-365-1331

DonaldsonTorit.com



Tel 800-365-1331 (USA)
Tel 800-343-3639 (within Mexico)
donaldsontorit@donaldson.com
donaldsontorit.com

Donaldson Company, Inc.
Torit
P.O. Box 1299
Minneapolis, MN
55440-1299 U.S.A.

EXACTLY WHAT YOU NEED.™

LP Baghouse Dust Collector Brochure (06/12)
© 2009 Donaldson Company, Inc. All Rights Reserved. All products, product specifications, and data (airflow, capacity, dimensions, or availability) are subject to change without notice, and may vary by region or country. Donaldson Torit is a registered trademark of Donaldson Company, Inc. Contains Donaldson proprietary technology.